



Manufacturers of Precision Dispense Systems & Valves

# See-Flo<sup>®</sup> 387

## Bench Top Meter-Mix-Dispense System



### Simple, Reliable, Production-Proven Dispensing

- Precision Material Ratios from 1:1 to 20:1 and wider
- Ideal for Shot Volumes from 1 cc to 35 cc and higher
- Vertical Mounted Meter is Engineered for Longest life
- All Pneumatic Operation does not require electricity
- In Use for Product Assembly Applications since 1967

# See-Flo<sup>®</sup> 387 Operation Features

Dispense Valve and Mixer

4 Liter SST Supply Tanks

Adjustable Valve Bracket

Shot Size Adjustment

Drain Valves for Tanks

Air Pressure Gauge

Air Pressure Adjustment

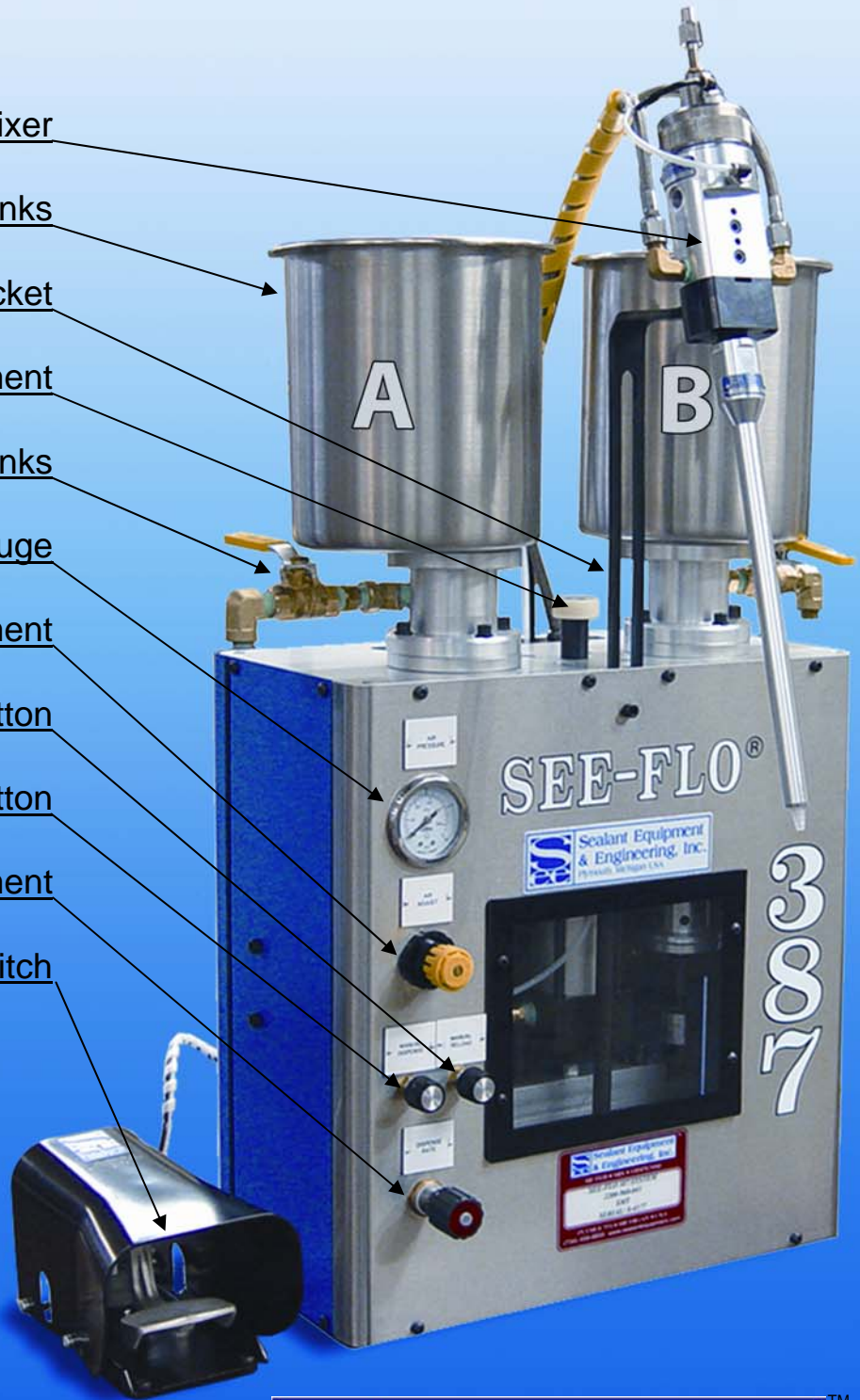
Meter Reload Push Button

Dispense Start Push Button

Flow Rate Adjustment

Dispense Start Switch

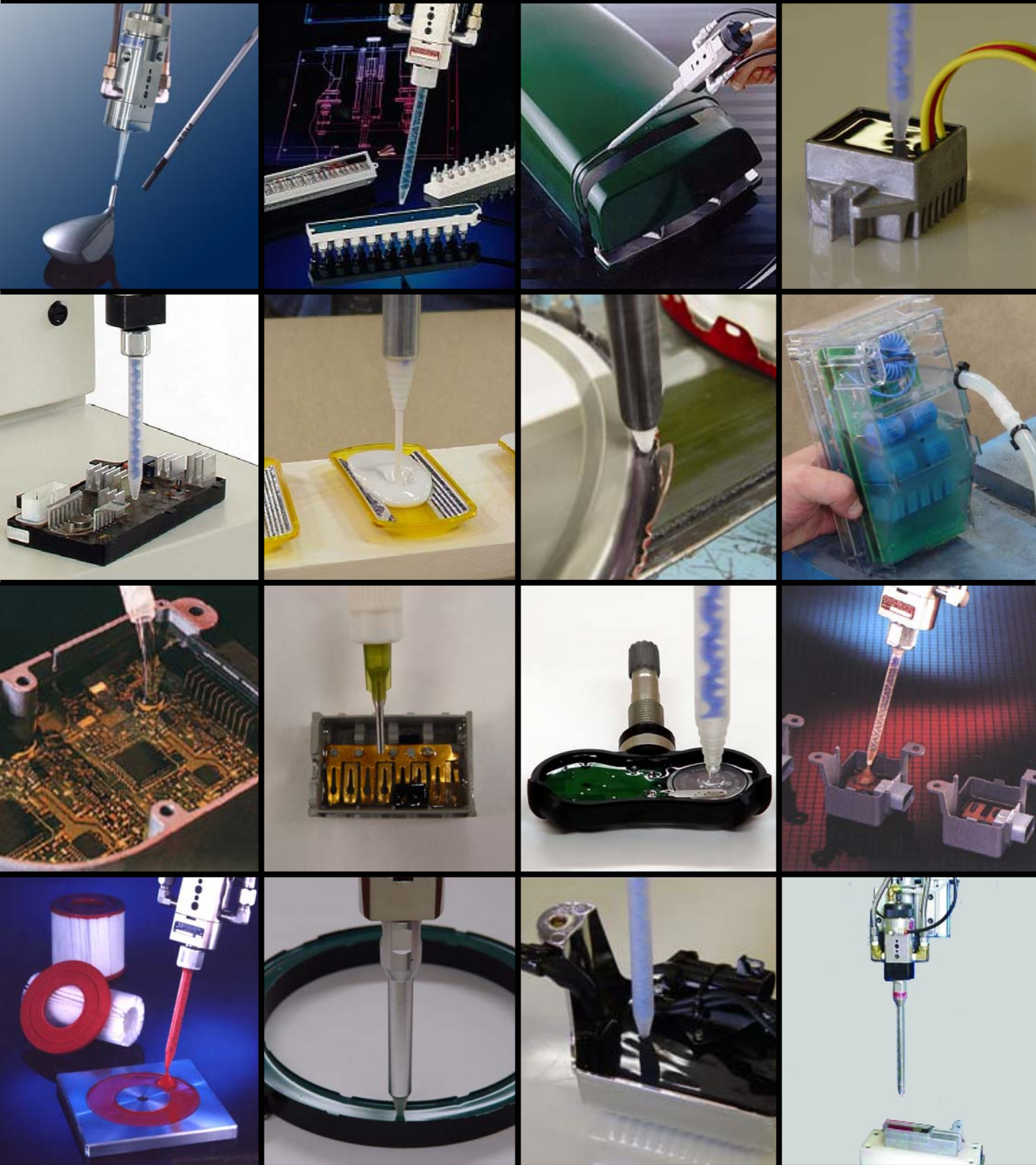
**Easy to operate:  
Connect air line,  
fill supply tanks,  
start dispensing!**



Manufacturers of Precision Dispense Systems & Valves

# See-Flo® 387 Applications

Meter-Mix-Dispense 2-Component Epoxy • Acrylic • Silicone • Polyurethane for Bonding • Coating • Dispensing • Doming • Encapsulating • Extruding • Filling • Gasketing • Open Molding • Potting



See-Flo 387 is used for product assembly applications in aerospace, appliance, defense, electronics, filters, marine, medical, robotic, sporting goods, telecommunications and automotive, truck and bus manufacturing.

# See-Flo® 387

Economical • Reliable • Compact • Bench Top • All Pneumatic • Easy To Use • Simple Operation



See-Flo 387 with different supply tank size options and manual dispense valve assembly

## Machine Specifications:

- Supply Air: Must be from filter and dryer assembly
- Air Pressure: Minimum 60 PSI (415 kPa)
- Main Air Inlet Port: 1/4" NPT Ball Valve
- Part A & B Tank Drain: (2) 1/4" NPT Ball Valves
- Materials of Construction: Carbon Steel, Stainless Steel, Elastomer Seals
- Drive for Meter: Air over Oil Cylinder with Oil Tank
- Dimensions: 8.2" deep x 16.2" wide x 28" high
- Supply Tanks: (2) 1 gallon, stainless steel with lid
- Dispense Valve: No-Drip® with Disposable Mixer, Shroud, Flow Divider and Grease Cap
- Dispense Valve Bracket: Cabinet or Remote Mounted
- Use Multiple Dispense Starts for Larger Shot Sizes

## Machine Options:

- 3 Gallon (12 liter) Gravity Feed Supply Tanks
- All Stainless Steel Wetted Components
- Remote dispense signal from solenoid valve or PLC

## Features:

- ▶ Complete Meter/Mix/Dispense system for two-component, low viscosity materials
- ▶ Shot sizes from 1cc to 35 cc (at 1:1 ratio)
- ▶ Unit is all air powered. No electric required
- ▶ Flow rate is controlled by an air-over-oil Air-Draulic™ drive system for flow control
- ▶ Fixed ratio meter assembly for accuracy
- ▶ Adjustable shot size & flow rate control
- ▶ 'Shot' mode for measured amounts
- ▶ 'Jog' mode for manual applications

## Components:

- ▶ See-Flo 387 System includes:
  - (2) One gallon (4 l) SST supply tanks
  - (1) Fixed ratio metering system
  - (2) Fluid dispense hoses (A and B)
  - (1) Adjustable No-Drip® Dispense valve
  - (25) Disposable No-Flush® mixers
  - (1) Metal Shroud for Mixer
  - (1) Foot pedal Start-Dispense actuator
  - (1) All Pneumatic controls

## Larger Dispense Volumes:

For larger shot volumes required than indicated above simply use multiple dispense start actuations.

Example: The maximum volume of a 2:1 ratio is approximately 26 cc (17.5cc + 8.7cc). To dispense 48 cc of 2:1 material set the shot size to 24 cc and dispense 2 shots of material. There is no limit to the maximum volume dispensed.

## Smaller Dispense Volumes:

For smaller shot volumes consider selecting the MicroMeter® line of 2-part metering systems:

**See-Flo 391** Pneumatic Drive Micro-Meter

**See-Flo 202** Air-Over-Oil Micro-Meter

**See-Flo 801** Servo-Drive Micro-Meter



Manufacturers of Precision Dispense Systems & Valves

45677 Helm Street • P.O. Box 701460

Plymouth, MI 48170 • USA

Phone: (734) 459-8600 Fax: (734) 459-8686

Website: [www.SealantEquipment.com](http://www.SealantEquipment.com)

Email: [Sales@SealantEquipment.com](mailto:Sales@SealantEquipment.com)